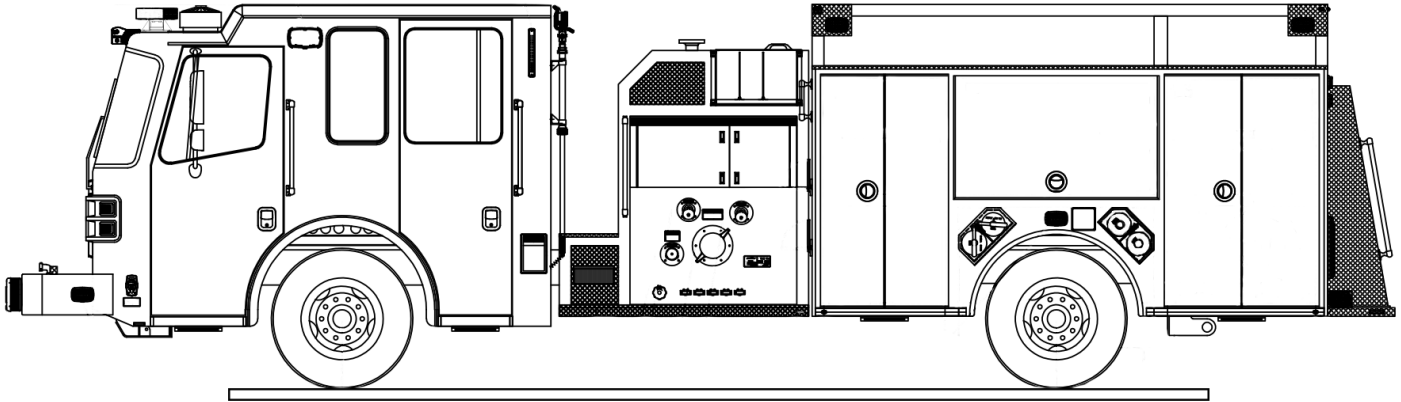




## SHERWOOD (AR) INFERNO CUSTOM PUMPER

Truck # 7216



### CHASSIS

- Ferrara Inferno 4-door chassis with 8" raised roof
- Cummins X12 455 HP engine
- Allison 4000 EVS transmission
- 24,000 lb. Hendrickson STEERTEK front axle and suspension
- 27,000 lb. Meritor rear axle with spring suspension
- Bostrom seating for (5) firefighters
- 212" wheelbase
- 9'6" overall height
- 34' 4-1/4" overall length

### BODY FEATURES

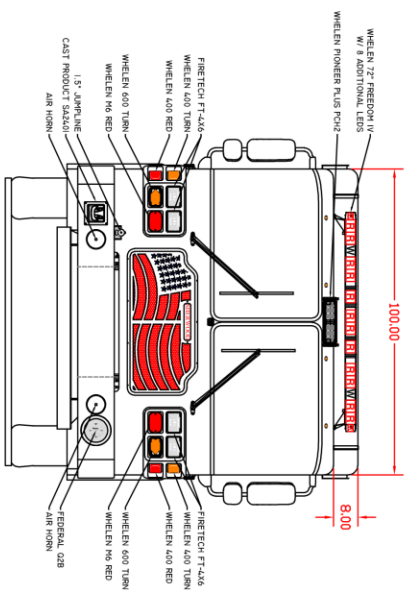
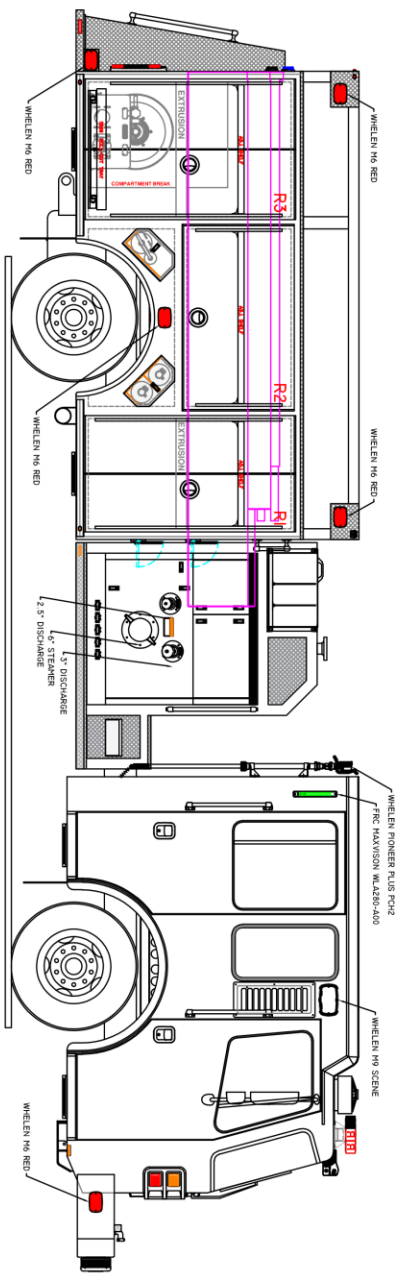
- 3/16" extruded aluminum body
- 102" wide body
- Full height/split depth compartments both sides
- Ladders stored internally beside water tank

### ELECTRICAL & WARNING

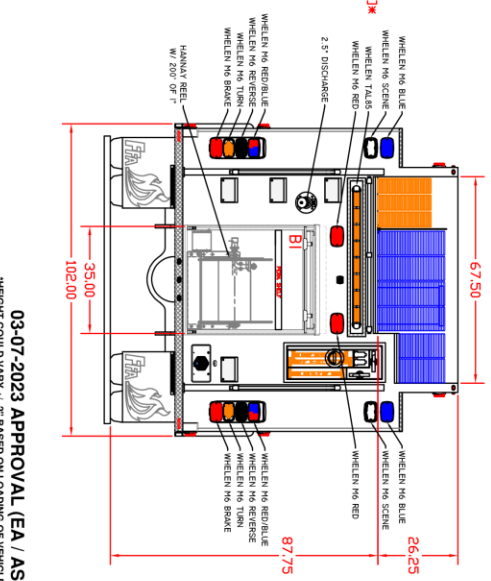
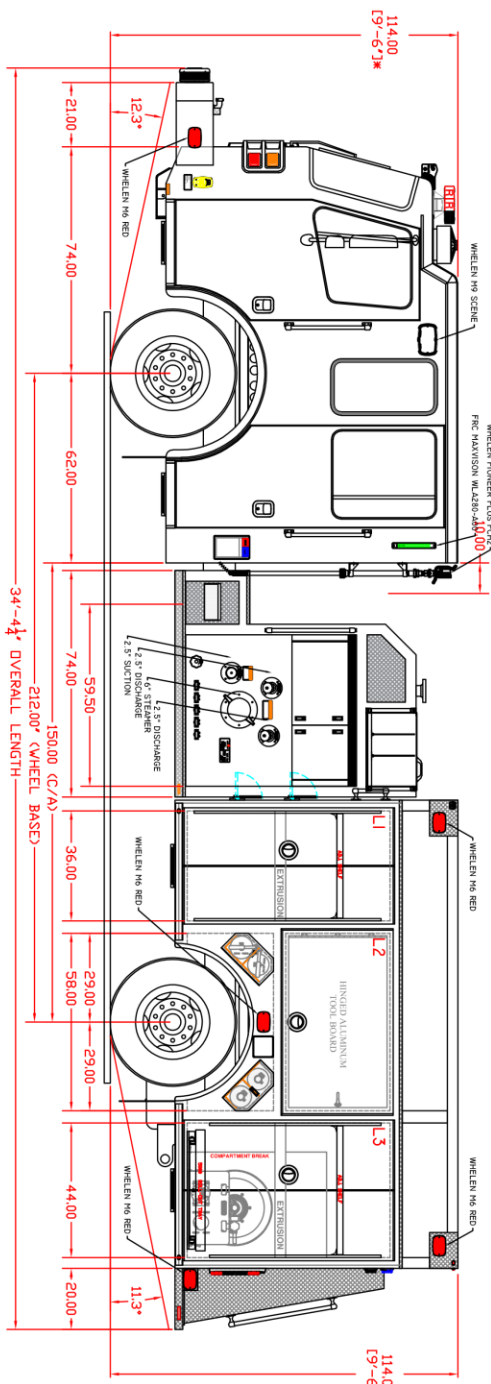
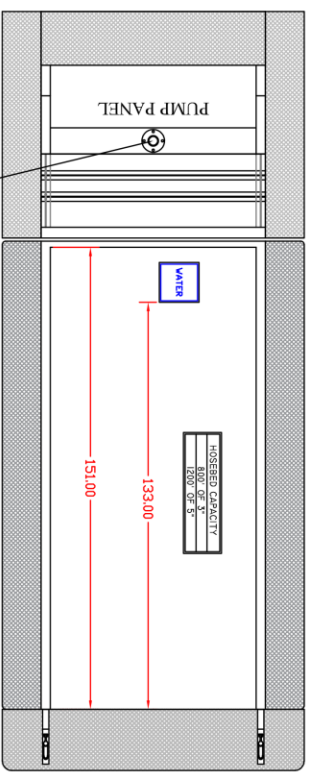
- Whelen warning light package.
- FireTech LED headlights.
- Whelen side and rear scene lighting.
- Federal Signal Q2B mechanical siren.

### PUMP & PLUMBING

- 750-gallon tank.
- Topmount pump controls
- Hale QMAX.1500 GPM pump
- (2) 2.5" pump panel discharges on left side
- (1) 2.5" pump panel discharge on right side
- (1) 3" pump panel discharge on right side
- (1) 2.5" rear discharge
- Deck gun
- (2) 2" double stack crosslays.
- (1) 2.5" single stack crosslay
- Booster reel



COMPT. OPENING		INTERIOR	
L1	36W X 66H	36W X 70H X 150 DEPTH	
L2	58W X 34H	58W X 38H X 13D	
L3	44W X 34H	44W X 70H X 150 DEPTH	
R1	36W X 66H	36W X 70H X 150 DEPTH	
R2	58W X 34H	58W X 38H X 15D	
R3	44W X 66H	44W X 70H X 150 DEPTH	
B1	32.5W X 37.25H	35W X 45H X 38D	



**SHERWOOD FIRE DEPARTMENT**  
**SHERWOOD, AR**  
**JOB NO.: H7216**  
**1,500 GPM HALE QMAX PUMP**  
**750 GALLON WATER TANK**

**CUSTOMER APPROVAL**

NAME: \_\_\_\_\_  
 TITLE: \_\_\_\_\_  
 DATE: \_\_\_\_\_

THE DRAWING IS A VERBAL REPRESENTATION OF A SPECIFIC PRODUCT. THE EXACT SPECIFICATIONS ARE SUBJECT TO CHANGE WITHOUT NOTICE. THE CUSTOMER APPROVAL IS THE RESPONSIBILITY OF THE CUSTOMER.

03-07-2023 APPROVAL (EA / AS)  
 \*HEIGHT COULD VARY +/-" BASED ON LOADING OF VEHICLE