



MVP RESCUE LADDER

Easily being the most versatile apparatus available, the MVP Rescue Ladder is available with up to 500 gallons on a single rear axle and up to 250 cubic feet of storage. This unit is available with the standard 77 foot heavy duty aerial device and is also available in our HD-57 aerial.

The low crosslays are easy to deploy and safer to reload while standing on the street. The MVP's pump is a traditional shaft driven midship, ratable up to 2250 gpm. Its quiet, rattle-free gearbox takes stress away from the pump operator and lets him concentrate on the job at hand.

SPECIFICATIONS

Chassis:	Cinder and Igniter up to 450hp, Inferno up to 600hp, Ultra up to 500hp
Body:	Extruded Aluminum
Compartments:	6 compartments left, 4 compartments right plus EZ-Stack hose bed, 4 compartments rear
Ladder Storage:	Up to 150'-156' enclosed in full length torque box
Pump Size:	Available from 750 gpm to 2250 gpm
Tank Size:	Up to 500 gallons on single axle
Ladder and Reach:	3-section heavy duty steel ladder with -8° to +72° operational envelope Over 180° rotation at -8° 77' vertical reach at 72° and 70' horizontal reach at 0° 45' vertical and 60' horizontal reach at 30°
Rated Load Capacity:	500 pounds dry / 500 pounds flowing 1500 gpm Up to 2000 pounds distributed + 500 pounds at the tip while flowing 1500 gpm No restrictions on waterway monitor positioning while flowing 1500 gpm
Warranty:	10 year cab and body structural, 25 year aerial structural, 10 year waterway and waterway seals, 15 year torque box & stabilizer



FEATURES & OPTIONS



Supply a standpipe without disconnecting the nozzle optional 2-1/2" discharge at the ladder tip



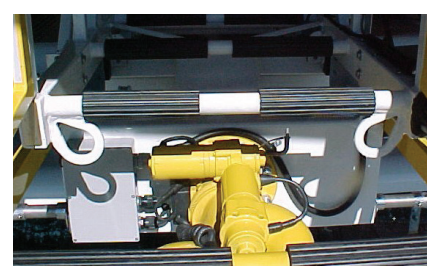
Quickly put out a fire in an attic or upper void area with our optional 165 vertical travel monitor



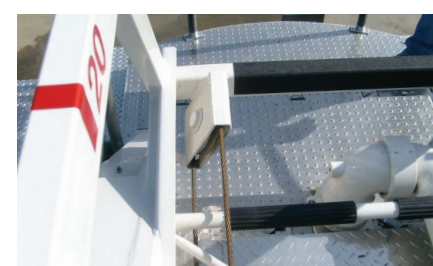
Standard 11° angled, bolt-on egress section for easy transition to a window or roof



Optional recessed magnet in the auxiliary pad for connecting to the stabilizer foot pad



Standard pair of load lifting eyes at the ladder tip are rated at 500lbs as a pair for added rescue capability



All sheaves are fully enclosed, so PPE or other gear won't get caught between the cable and pulley



Stabilizer foot pads are angled slightly down toward the middle of the truck



Extension/retraction is smooth and rapid with our dual Siamese extension cylinders



Well-lit ladder rungs for safe and easy night operations

