



PLATFORM RM TRUCK

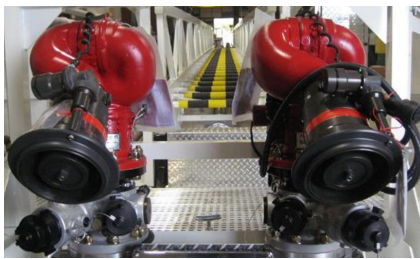
Safety. Heavy Duty Construction. Performance. These are all qualities you look for in an aerial platform. The Ferrara Rear Mount Platform gives you those and more. It also boasts Ferrara's legendary heavy duty construction with 3/16" thick aluminum cab and body plus a 100,000 psi steel aerial. For safety, the aerial has a full complement of safety interlocks, the cab and body have been load tested to 66,000 pounds in excess of NFPA 1901 requirements.

SPECIFICATIONS

Chassis:	Inferno up to 600hp, Ultra up to 500hp
Body:	Extruded Aluminum
Compartments:	Left and right side full height, 24" deep lower, transverse above the ladder tunnel
Ladder Storage:	Up to 200' ground ladders enclosed in full length torque box
Ladder and Reach:	3-section heavy duty rear mount aerial with -12° to +80° operational envelope Over 180° rotation at -12° 102' vertical reach at 80° and 93' 3" horizontal reach at 0° 70' 10" vertical and 72' 10" horizontal reach at 40° and 95' horizontal and over -9' vertical at -12° and full extension
Rated Load Capacity:	1000 pounds dry / 500 pounds flowing 2000 gpm with 2.5:1 safety factor Up to 2250 pounds distributed + 500 pounds in the platform while flowing 2000 gpm No restrictions on aerial or monitor movement or placement while flowing 2000 gpm Optional 3000 gpm waterway
Platform:	22.8 square feet interior working area Dual, swing-in gates
Warranty:	10 year cab and body structural, 20 year aerial structural, 5 year aerial swivel, 10 year aerial waterway



FEATURES & OPTIONS



Available in electric and manual or both electric configurations. Shown with TFT VUM for additional 2-1/2" discharge



The rotation drive is under the turntable step with easy transition from the turntable to the aerial ladder



The top of the torque box has a recessed channel to accommodate wiring and hydraulic lines



Our outrigger controls are waterproof, rubberized push buttons, which are function illuminated for fast setup



Carry more gear with rescue style compartments with openings on the driver side is 24" deep x full height



Operate on ground only 33' from apparatus with 240° of rotation at -12° reaching 9' below street level extended



Reduce friction loss and increase water flow with standard 2000 GPM unrestricted flow rating or optional 3000 GPM



Optional increased stroke outriggers provide additional leveling capabilities up to an 11° grade



Well-lit ladder rungs for safe and easy night operations

