



CUSTOM BUILT | HEAVY DUTY | MAXIMUM RESPONSE

www.ferrarafire.com



OUR VEHICLES CONNECT AND PROTECT
PEOPLE AROUND THE WORLD EVERYDAY.
www.revgroup.com



CUSTOM BUILT

There are many options when choosing a fire truck manufacturer. No builder works harder than Ferrara to individually design the perfect apparatus to fit every need and performance requirement of the community it will serve.

From the beginning, we listen to your department's current needs to establish a solution road map. Working closely with our engineers, our representatives will develop an advanced apparatus concept that can be adjusted to meet your needs.

If you prefer a more hands-on approach, you will be able to meet with our engineers to finalize the apparatus pre-build. While here, we encourage you to walk on the production floor and meet our production team that will be building your truck. This experience will give you insight on our construction methods and may inspire some new ideas for your apparatus.



Once you are satisfied with the concept and it has been engineered and approved, the Ferrara production team will begin building the new apparatus. Our experienced production team uses the latest technological methods and heavy duty materials to construct the strongest trucks in the industry.

During the construction process, your department will be able to monitor the progress of your truck online. Throughout different phases of construction, you will also have the option to visit the factory and personally inspect your new apparatus.

The Ferrara Service and Parts Department will always be available to help you with any service issues you may have with your apparatus. We offer a 24-hour service hotline, mobile service technicians and door-to-door apparatus pick up.

HEAVY DUTY

Focusing on firefighter crews' safety is our core objective in building the strongest apparatus in the industry. This is evident in the design, materials used and service records of the nearly 6,000 Ferrara trucks that are in service today.

Ferrara's custom cabs and bodies are built from an extruded aluminum frame and 3/16" thick marine grade aluminum plate; the strongest and most durable in the industry and considered by many to be **STRONG AS A TANK!**

In an independent third party study, Ferrara cabs and bodies proved to be stronger than the competition in overall tensile/load limit, endurance limit and RBM (Resisting Bending Moments). All of our cab and body extrusions are certified 6061 T6 structural aluminum.



We put our custom chassis, cab and body to the ultimate test via the Economic Commission for Europe Regulation 29 (ECE R29). We tested our cab a full six years before this test became a requirement of NFPA 1901. Not only did we pass these tests, but we exceeded all requirements.

The standards call for the roof to be able to withstand a force of 22,000 lbs. Ferrara exceeded that requirement by three times over, placing a total of 66,000 lbs on the roof with no damage to the crew area.

The cab was also subjected to a simulated impact of a head-on collision where 3,700 lbs were swung on a pendulum into the front of the cab to simulate an impact velocity of 18 mph. There was no passenger compartment intrusion nor were there any failed structural components in the cab.

Lastly, we placed all 66,000 lbs on top of the extruded aluminum body with no resulting structural deformity. This is not a required part of the ECE-R29 standard; however, it did demonstrate the strength of the body and an additional measure of protection for apparatus occupants.



CUSTOM CHASSIS

Proven in design and durability, Ferrara Custom Chassis set the standard for innovation and safety. Based on customer feedback on what they liked and did not like about the products that were already on the market, Ferrara used cutting edge technology to bring you the strongest and safest custom chassis on the market.

Ferrara offers four different models that feature twelve different cab styles with over 50 different configurations available. There are also many specialty chassis designs to fit specific needs any department may have such as all-wheel drive, low profile aerial and a short wheel base.

- Cabs are built from extruded aluminum and 3/16" thick marine grade aluminum plate
- Reinforced roll cage provides extra occupant protection
- Double channel, heat treated frame rails
- Reinforced bumper extension and a 3/8" thick radiator skid plate
- Crash tested to nearly three times that specified by ECE-29 standards
- Maximum visibility with 4,200 square inch windshield and 43-degree view
- Roll Stability Control
- CAP+ complete airbag protection
- F-Shield corrosion protection

INFERNO

- 100" wide 3/16" thick extruded aluminum cab
- ISX12 & ISX15 engines with 4000EVS transmission
- Fully customizable cab and chassis

IGNITER

- 100" wide (96" wide optional) 3/16" thick extruded aluminum cab
- ISL9 engines with 3000EVS transmission
- Fully customizable cab and chassis

CINDER

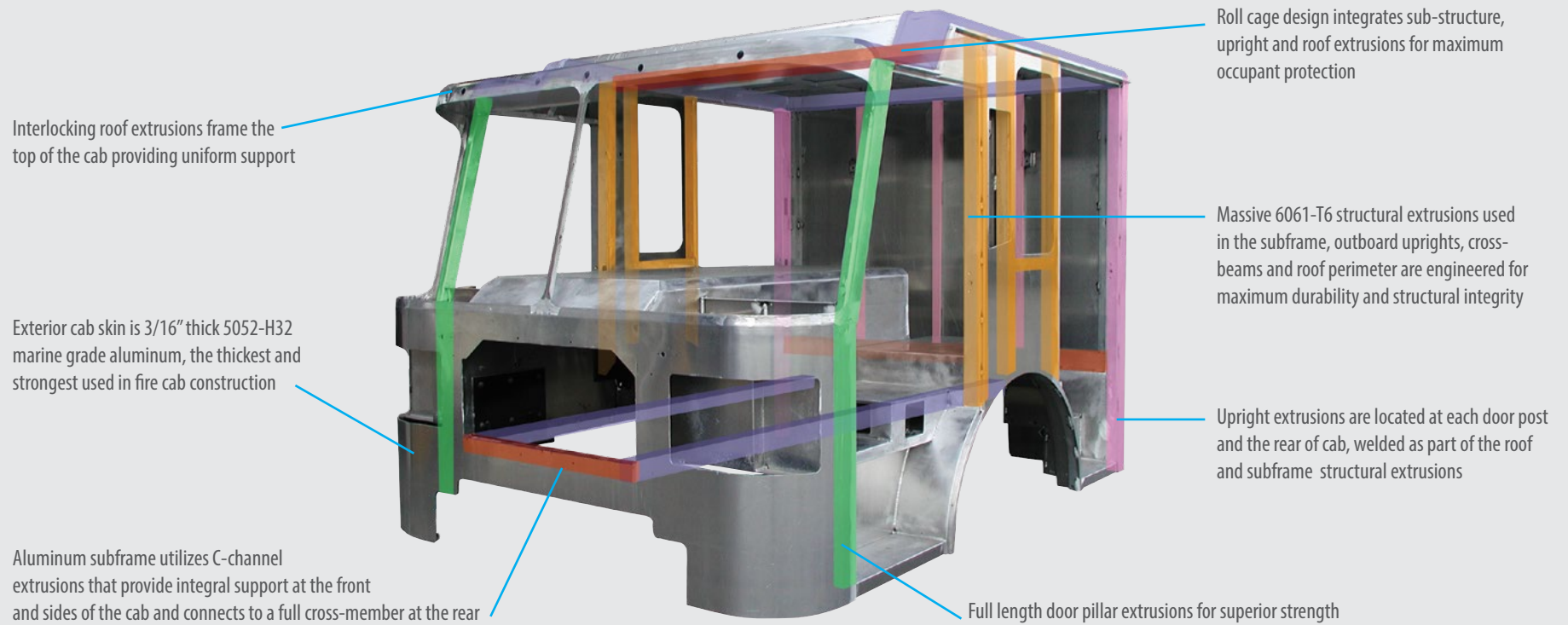
- 96" wide 3/16" thick extruded aluminum cab
- ISL9 engines with 3000EVS transmission
- Entry level custom cab and chassis with limited options

ULTRA

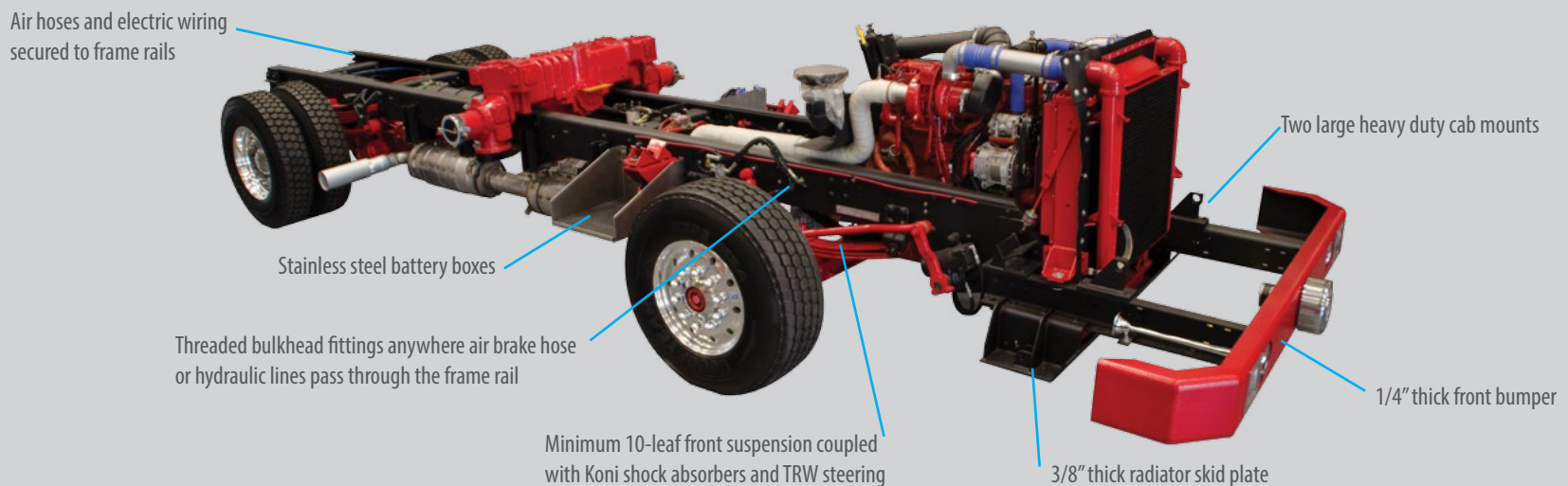
- 100" wide 3/16" thick extruded aluminum cab
- 96" wide stainless steel
- Cabs available in both a full tilt and split tilt version
- ISX12 engines with 4000EVS transmission and ISL9 engines with 3000EVS transmission
- Fully customizable cab and chassis



SAFEST CAB



TOUGHEST CHASSIS





CUSTOM FIRE BODIES

Throughout the years, we have redefined the way custom fire bodies are designed and built. Our experienced team of engineers and craftsmen give you virtually unlimited flexibility when it comes to creating the body that will meet the needs of your fire department.

Built to last a lifetime, our extruded aluminum fire body is the strongest and most durable in the industry. Built from 6061-T6 and 6063-T6 aluminum alloys, each of our certified extrusions are custom designed for a specific use in the apparatus body.

Our sub-frame, compartment framework, hose bed, wheel wells, beavertails, pump compartment and running board/tailboard assemblies all rely upon heavy duty extruded aluminum shapes that have a particular design function.

- Constructed of interlocking extrusions with wall thicknesses ranging from 3/16" to 7/16"
- Slanted beavertails, extended depth tailboard compartment and full width intermediate rear step are standard
- Reinforced pump compartment
- Custom ladder and equipment storage solutions
- 28" deep full height / full depth compartments

OTHER BODIES AVAILABLE:

Modular 12 gauge galvalume

Modular 3/16" aluminum

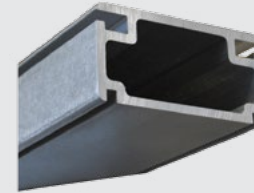
Modular 12 gauge stainless steel

STRONGEST BODY

EXTRUDED ALUMINUM FIRE BODY



Sturdy 5/8" diameter U-bolts secure the body to the frame, forward U-bolts are spring loaded to withstand movement of chassis frame



Compartment framework made of 2" x 4" extrusions



Body Compartments are 5052 H-32 3/16" thick aluminum alloy plate and continuously welded for extra strength

Double I-beams are reinforced with massive 2" x 4" extruded gussets



7/16" thick, 3" x 4" double I-beam cross members for extra support



Sub frame is welded to 3/4" thick extruded aluminum frame rails and isolated from chassis frame by 1/2" thick neoprene rubber extruded channel



Booster tank protection shield

Corners are made from 3.5" x 9.75" vertical extrusions with wall thickness of 1/4" for extra strength



PUMPERS

Being one of the most crucial assets to fire departments worldwide, Ferrara pumpers are engineered to meet the exact needs of your department and are built to last a life time.

From traditional pumper style bodies to full height/full depth rescue style compartments, Ferrara's design flexibility allows you to never compromise on performance, space or safety.

- Top mount, side mount or rear mount pump panels
- Pumps available from 750 gpm to 5500 gpm
- Water tanks available from 300 gallons to 1250 gallons
- Foam systems and foam cells up to 50 gallons
- Full height compartments as deep as 28"
- Enclosed through-the-tank storage for ladders, backboards, hard suction and pike poles
- Variety of crosslay, speedlay and walkway crosslays available
- Available low hose bed with 750 gallon tank
- Wheelbase as short as 159" with midship fire pump
- Remote control monitors available



CUSTOM PUMPER

Strong and tested; features Ferrara custom chassis, heavy duty fire body and any kind of compartment layout you can imagine.



COMMERCIAL PUMPER

Perfect for departments in smaller rural areas; features customized pump and compartment layouts on one of many commercial chassis.



SUPER PUMPER™

The newest model in the Ferrara pumper fleet, this truck features the US Fire Pump 5500 High Velocity Pump and can reach flow rates of 5500 gpm from draft and 10,000+ gpm from a pressurized source.

MVP

MVP RESCUE PUMPER

Never before has a truck had such an impact on the firefighting industry as the MVP Rescue Pumper. Maintaining the performance capabilities of a custom pumper while carrying an immense amount of rescue equipment makes this truck truly the Most Valuable Player.

Designed with firefighter safety in mind, the MVP features low step heights, frame rail height crosslays and lowered body height to make equipment retrieval easier and safer. The compact pump panel provides everything you expect in a pumper such as jump lines, triple crosslays, deck gun, rear body, hose bed and LDH discharges.



- Traditional mid ship pump up to 2250 gpm
- Water tank up to 1000 gallons
- Frame rail height low crosslays
- Hose bed: 1200' of 5" and 600' of 3" DJ
- Over 500 cubic feet of compartment space
- Optional 183" wheelbase with over 460 cubic feet of storage
- Easy roof top storage access
- Customizable rescue tool storage solutions
- Optional pump and roll



LADDERS

Staying true to Ferrara's core values of offering the strongest customized fire trucks in the industry, our heavy duty aerial ladders are built from the strong 100,000 PSI yield strength steel tubing with reinforced critical points and A606 Type 4 steel ladder rungs for maximum strength and corrosion protection.

Ferrara offers nine different models of heavy duty aerial ladders, ranging from the 2-section HD-57 all the way up to the impressive HD-127. Each aerial ladder is certified by an independent third party during and at the conclusion of the construction process.

- Devices with a pre-piped waterway have tip loads ranging from 500 to 1500 pounds while flowing water
- Easy to climb with max elevation angle of only 72 degrees means greater horizontal reach and safer climbing angle
- Longer horizontal reach by achieving higher reach at lower elevation
- Dual position waterway with electric actuator for safe and rapid deployment
- LoadMinder provides real time display of loads being placed on ladder
- LED rung illumination for safer nighttime climbing
- Enclosed, greaseable pulleys insure nothing gets caught in cables
- Rotation interlock during short jack operations
- Full length torque box for maximum stability of the aerial device



MVP RESCUE LADDER

All the performance of a Ferrara Ladder with 250 cubic feet of equipment storage, low crosslays and easy access make this the most versatile ladder ever.

MVP



HD-77 LADDER

Premium performance and maneuverability with 77' vertical reach at only a 72 degree angle, flexible body configurations and up to 500 gallon water tank on a single rear axle.



HD-107 LADDER

Extended vertical reach of 107' at a 72 degree angle and 101' at 0 degrees, 750 lb tip load while flowing 1500 gpm, spacious compartments and up to 650 gallon water tank.



LP-102 LADDER

With 102' vertical reach at a 72 degree angle, this low profile ladder can go where others cannot with overall heights of 10'10" with waterway or 10'4" without waterway.

Also Available: HD-57, HD-127, SHD-100 and HD-100 Mid Mount



PLATFORMS

Engineered, designed and built for continuous use in extreme environments, Ferrara aerial platforms are always heavy duty. With five different models that range from 75 to 100 foot elevation, there is one that will fit your needs.

Stability is crucial which is why we use a gravity level-sensing inclinometer which reduces additional hydraulic lines and keeps the platform leveled even when the apparatus is positioned on a severe grade.

- Manufactured in accordance with NFPA 1901
- Each model has three stages of independent third party testing
- Generous interior work area with 18 square feet on the 75' mid-mount, 20 square feet on the 85' and 100' mid-mount and 21 square feet on the 85' and 100' rear mount models
- Egress handrails stay with aerial fly section for easy access
- Monitors available in single or dual configurations
- Various 2-1/2" and 1-1/2" discharges available in platforms
- Spacious compartments and hose beds
- The 75' mid-mount, 85' rear mount and 100' mid and rear mounts are available with traditional mid ship pump and up to 300 gallon water tank
- Optional rescue package with 500 lb rappelling arm, platform stokes mount and parapet roof ladder brackets
- Optional 6000 psi breathing air system



HD-100 REAR MOUNT PLATFORM

3-section heavy duty ladder, 100' vertical reach at only 72 degrees elevation, 98' horizontal reach, 500 pound tip load while flowing 2000 gpm, 1250 pound dry tip load, 200 degree arc of rotation when the ladder is at -12 degree elevation.



HD-100 MID MOUNT PLATFORM

5-section heavy duty ladder, 100' vertical reach at only 72 degrees elevation, 99' horizontal reach, 500 pound tip load while flowing 1500 gpm, 1000 pound dry tip, travel height as low as 10'0".

Also Available: HD-85 MM PLATFORM and HD-75 MM PLATFORM



TANKERS

Whether you need to shuttle water or need a tanker-pumper, Ferrara's team of engineers will design exactly what you need. We build a complete line of tanker apparatus, from 1,250 gallons to 3,500 gallons and beyond.

We can also help you stay within your budget with either wet wall design, elliptical or a traditional pumper-tanker style body. Single axle vehicles are available with tanks up to 1,800 gallons for excellent maneuverability.

- Available with side mount or top mount pump control panel
- Side dumps available in 8" round or 10" square with air or electric actuators with telescopic extensions
- Rear dump valves available from 6" to 10"
- Class A injection foam systems or CAFS available
- Optional folding tank compartment or hydraulic tank compartment



CUSTOM TANKER

Built on a Ferrara custom chassis and heavy duty extruded aluminum fire bodies, these are the strongest tankers in the industry.



COMMERCIAL TANKER

Available on a number of different commercial chassis, these tankers are extremely budget friendly.

WILDLAND

Designed to meet the rigorous demands of off road applications, while meeting the individual design needs of your fire department. A long list of pump and plumbing options, including compressed air and class "A" foam systems, ground sweep nozzles and bumper turrets allow you to adapt to your environment.

You can customize your department's vehicle with drip torch compartments, specifically designed hand tool storage, easily changeable hosebed storage options, I-zone brackets, dedicated fusee compartments, roll bars, brush guards and a wide variety of booster reel locations just to name a few.

- Available in 4x2, 4x4, 6x4 or 6x6
- Custom chassis with a 20 degree angle of approach and departure
- Spacious rear compartments and long handled tool compartments for wildland tools
- Drip torch compartments under rear cab step
- Pump and roll with PTO and/or auxiliary pump options



TYPE I & II

Urban-wildland interface apparatus that can cover city streets and wildland secondary roads while offering the same features and benefits as our custom pumpers.



TYPE III

Fight wildland fires or prepare for a strike team response with a large water tank, rated pump, an auxiliary pump, out of County gear storage and a crew of 4 or more.



BRUSH TRUCK

Heavy duty rugged 3/16" thick aluminum diamond plate compartments, rear or side pump controls, recessed warning lights, compressed air and Class A foam systems.



QUICK ATTACK

Light and effective trucks built on small commercial chassis with pumps and water tank, abundant compartment space and optional foam systems.



RESCUE

Ferrara's complete line of rescue and specialty vehicles provide heavy duty construction and extreme performance. Each truck is designed to meet the customer's mission, policies and procedures.

Through complete customization, we utilize all available compartment space and storage areas as well as incorporating specialized high tech systems for top of the line rescue response. Design and function are the top priority in delivering the equipment you need.

Walk-In rescue interiors are available and designed to maximize interior and exterior space while providing accommodations for all applications including, special ops, hazmat, command and rehabilitation.

- Mobile communication solutions to meet high tech requirements
- Custom designed equipment and tool storage
- Safe and easily accessible roof top storage
- Complete air compressor systems with cascade and enclosed fill stations
- PTO, hydraulic or diesel generators
- Recessed and tower scene lighting, utilizing LED flood and spot combinations
- Rescue trailers also available



HEAVY RESCUE

Superior strength and performance of our custom chassis with a customized body from 20 to 33 feet, available walk-in or non-walk-in configuration.



MEDIUM RESCUE

Mounted on a lighter commercial chassis, available in 14 to 20 foot walk-in or non-walk-in bodies that maximize every inch of space available.



LIGHT RESCUE

Custom designed and built to handle rapid responses and an extreme call volume, the bodies are able to be transferred to a new chassis when the time is right.



SPECIALTY

Ferrara's design team can custom build and configure a rescue truck or trailer to fulfill a specific need for any fire department, police department, federal, state or local government agency.

HAZMAT

USAR

Command Center

Bomb Squad

Rehab

SWAT



Inundator Super Pumper
flowing 10,000+ gpm from
a pressurized source

INDUSTRIAL

Extreme apparatus for extreme situations. Residing in the heart of the petrochemical belt, Ferrara has always taken great pride in delivering heavy duty industrial solutions to refineries and facilities across the world. Our team of industrial specialist have years of experience working with facilities and designing custom apparatus that fit the exact needs and requirements of industrial fire departments.

Pushing performance boundaries and flow limits is the name of the game where we have been a constant innovator in the evolution of industrial firefighting. Recently Ferrara introduced the Inundator Super Pumper, capable of reaching 5500 gpm from draft and 10,000+ gpm from a pressurized source. The Inundator Super Pumper recently set the Guinness Book World Record for highest pumping capacity fire engine.

- Available in a multitude of configurations including split tanks for water and foam
- Side mount, top mount or rear mount pump controls
- 2250 gpm to 5500 gpm pump availability
- FoamPro AccuMax Multipoint Direct Injection Foam System with flow based technology minimizing friction loss in large flow scenarios
- 8000 gpm capable Williams Fire and Hazard Ambassador 2 wireless remote control deck gun
- 2000 to 3000 gpm rear position deck guns which can be supplied by either the pump system or from auxiliary sources independent from the pump system for total apparatus output over 13,000 gpm



HIGH VELOCITY PUMP

An extreme game changer, the HVP 5500 has allowed Ferrara to take industrial apparatus performance to the next level. It is the largest NFPA compliant fire pump ever built and optimizes flow through layout design. Learn more about the HVP 5500 at www.usfirepump.com.





SKYFLOW SP-100 LADDER

Features a 100' super heavy duty, open truss and aerial ladder in a low overall travel height mid mount configuration. This is the first aerial fitted with a rear mount US Fire Pump HPV pump and can reach flow rates of 5000+ gpm at 100' in elevation with no restrictions in aerial elevation or extension while still offering a 750# dry tip load for rescue operations.



INUNDATOR SP-85 BOOM

When versatility in elevated stream positioning is a must, Ferrara offers a Schwing America 85' three section articulating boom configuration with unrestricted flows up to 5000 gpm.

ALSO AVAILABLE:

INDUSTRIAL PUMPER

INDUSTRIAL AERIAL

INDUSTRIAL RESCUE

FOAM TENDER

GUINNESS
WORLD RECORD HOLDER



INUNDATOR SUPER PUMPER™

The Inundator Super Pumper is the first fire apparatus to be fitted with the new High Velocity Pump from US Fire Pump. This union delivers pump performance that is unheard of for any industrial pumper. While using standard 600 hp engine power, the HVP fire pump allows the Super Pumper to achieve greater performance through higher pump efficiency.

Each Inundator Super Pumper undergoes a UL certification process to achieve an industrial rating of 5500 gpm at 100 psi from draft as well as UL witnessed documentation to guarantee flow rates of 5500 gpm at 150 psi. When supplied via a pressurized water source, the Super Pumper delivers flow rates in excess of 10,000+ gpm. With the hazards of petroleum product tank fire extinguishment, DISTANCE IS EVERYTHING.

5500 GPM
From draft

10,000+ GPM
From pressurized source

500+ FEET
Flow reach



STAT PROGRAM TRUCKS

A full line of stock custom chassis and commercial chassis are available for quick builds in as little as 150 days. Contact us for more details.

www.ferrarafire.com/stat



FERRARA DEMOS

From Custom Pumpers to Aerials, Ferrara has many demo units that are available for immediate delivery. You may view photos and details online of each available demo.

www.ferrarafire.com/demos



REFURB AND SERVICE CENTER

Located directly across the street from Ferrara's main manufacturing plant, the Refurb and Service Center operates in a 48,000 square foot facility and is ready to serve large or small needs in fire apparatus maintenance.

The Refurb and Service Center does all types of work on a variety of apparatus from any manufacturer that includes:

- Preventative Maintenance
- Pump repairs and overhauls
- Electrical repairs
- Paint
- Collision work
- Minor and major refurbs
- Remounts
- Pump Testing
- Hydraulic and ladder repair
- Third party ladder testing
- Brush trucks
- Police command vehicles
- Quick response vehicles
- Sheet metal

Contact the Refurb and Service Center: 800-443-9006





CENTRAL FIRE PROTECTION DISTRICT #4

FERRARA FIRE APPARATUS

Leading the way in custom fire apparatus manufacturing, Ferrara has made a niche in the market by staying true to our core values of custom building each truck with the strongest materials and construction methods available. Our engineers work closely with each fire department to customize every truck to meet their exact needs and performance capabilities which allows our customers to get the most out of their investment. Heavy Duty is more than a saying, it is a culture that thrives on keeping our customers safe while building the strongest and most dependable fire trucks available.

CONTACT US

Office: 800-443-9006

Office: 225-567-7100

Fax: 225-567-5260

Email: info@ferrarafire.com

Follow Us



www.FerraraFire.com