

CONTROL-MAXX™

ELECTRICAL SYSTEM

User-friendly, modern, automotive-style screens put information and control at your fingertips.



10" LCD touch-screen, wide-view display



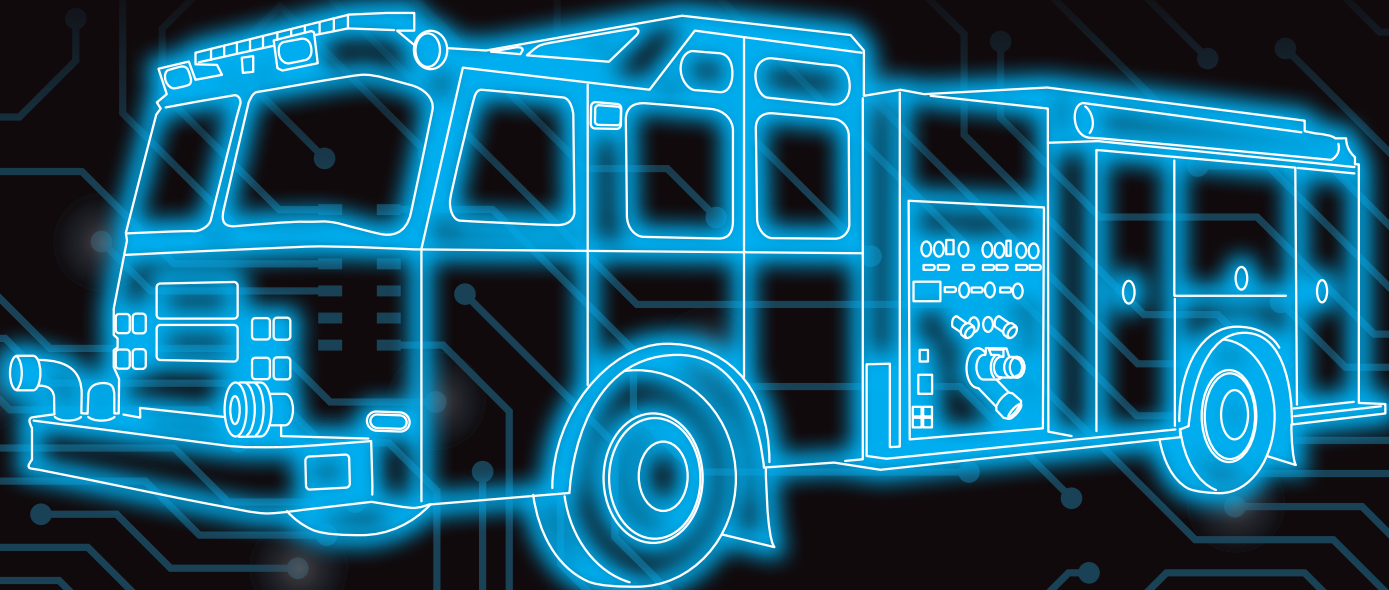
Digital dash display



Smart Wheel controls

Control-Maxx gets you connected.

Beginning with the 2027 EPA emissions engines, Control-Maxx electronics will be on all E-ONE, Ferrara, KME and Spartan custom chassis products. This totally new electrical system comes with a host of features and benefits that make fire truck operation and maintenance more intuitive and efficient for the driver, officer and fleet mechanic.





Control-Maxx Features

Large Control Display

High-resolution, 10-inch LCD touch-screen, wide-view display, located within easy reach and view of the driver.

Vibrant Control Graphics

Color-differentiated control functions in both graphical symbols and text.

Functionally Designed Display Screens

One screen for each response stage that provides the needed controls for driving, on-scene, pumping, officer data and more.

Backup Camera

Camera image integrated into the control display.

Voice Alerts

Spoken explanations replace buzzers or chimes to provide immediate recognition of alert messages.

On-Screen Diagnostics

Service technicians can troubleshoot the apparatus without the need for external devices.

Digital Dash Display

High-resolution display gives the driver all the information required in a modern, automotive look.

User-Selectable Functions

Fire departments can configure automatic or interlock functions to customize the apparatus to its needs.

Smart Wheel

Siren and horn controls are placed at the driver's fingertips.

Apple CarPlay

Firefighting apps, navigation and more can be displayed on-screen for either the driver or the officer.

Contact your local dealer to learn more.

